

Ram2000 • RAM-Puff
software option

Near-Real-Time Source Apportionment and Downwind
Plume Impact Analyses for the RAM2000 G2 FTIR

Ram-puff is integrated with RAM2000 instrument software on dedicated multi-processor server

- Assimilates RAM2000 and meteorological data every 15 minutes
- Prepares measured or forecast met input files
- Executes CALPUFF model in near-real-time.
- Displays graphical and tabular results
- Archives results for emissions fitting calculations
- All data and results are accessible remotely via Internet

Ram-puff is DESIGNED TO OPERATE ON RAM 2000
FTIR CONTROL COMPUTER



Typical RAM2000 instrument shelters



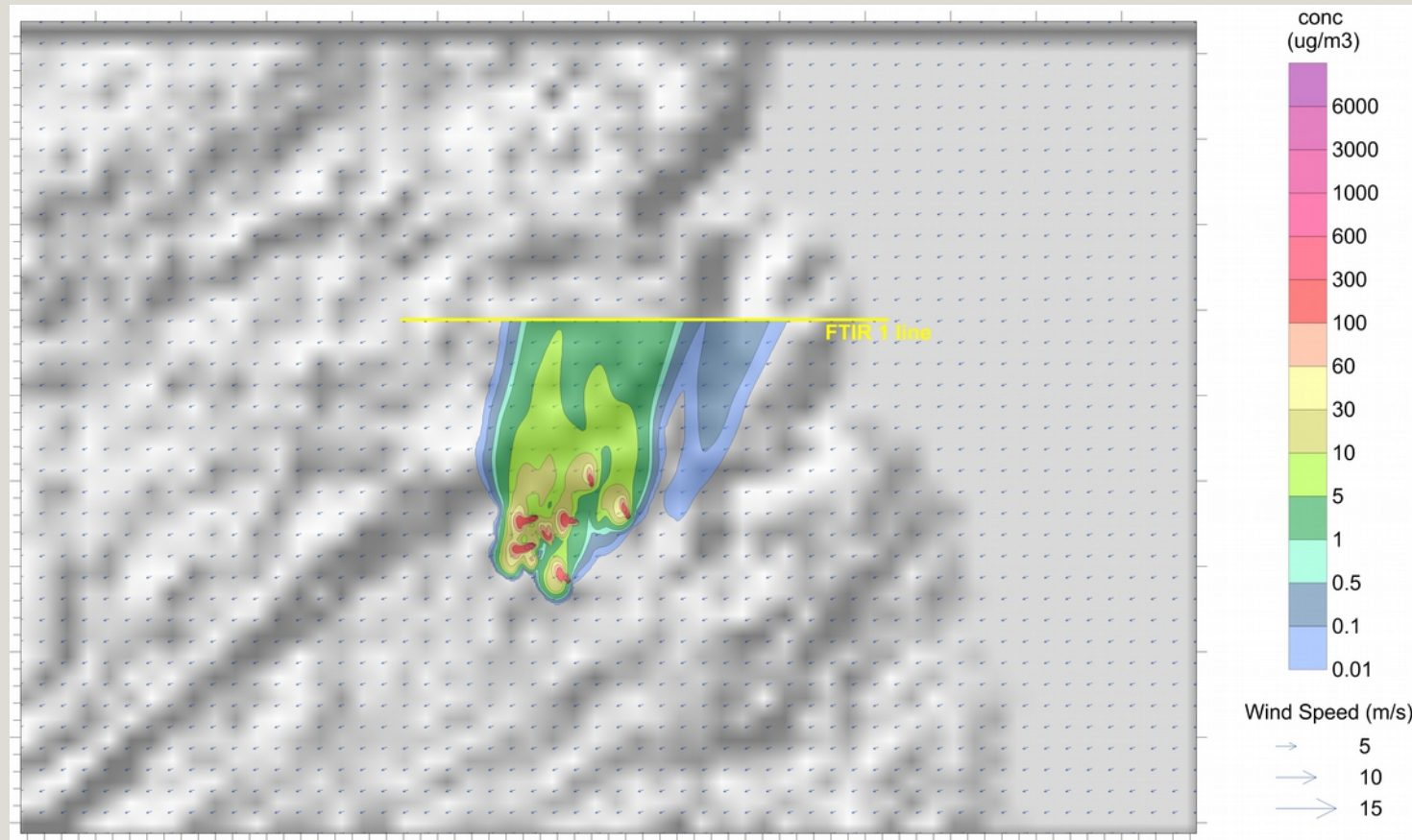
Typical IR Retro-Reflector installations



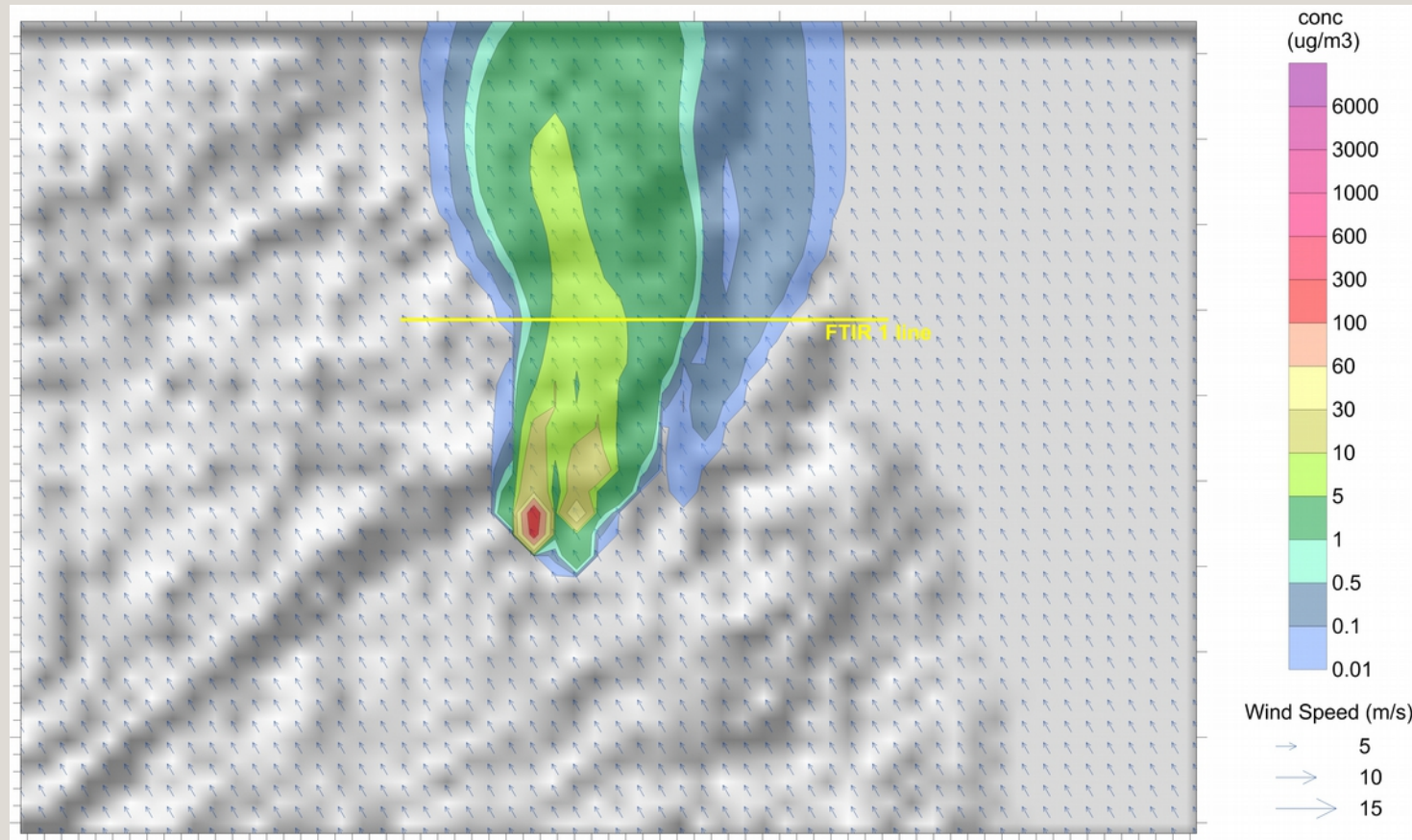
Typical IR Retro-Reflector Installations



RAM-PUFF Produces Real-time Plots of Potential Sources of FTIR Concentration measurements



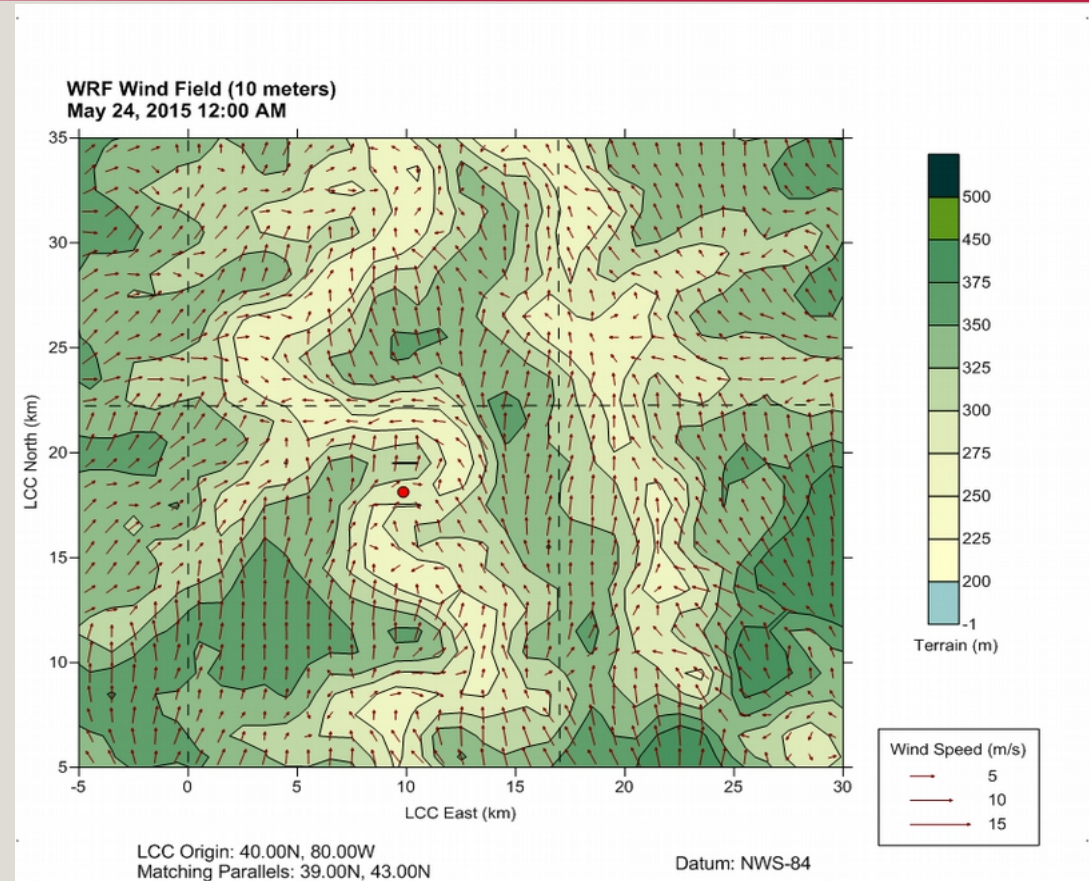
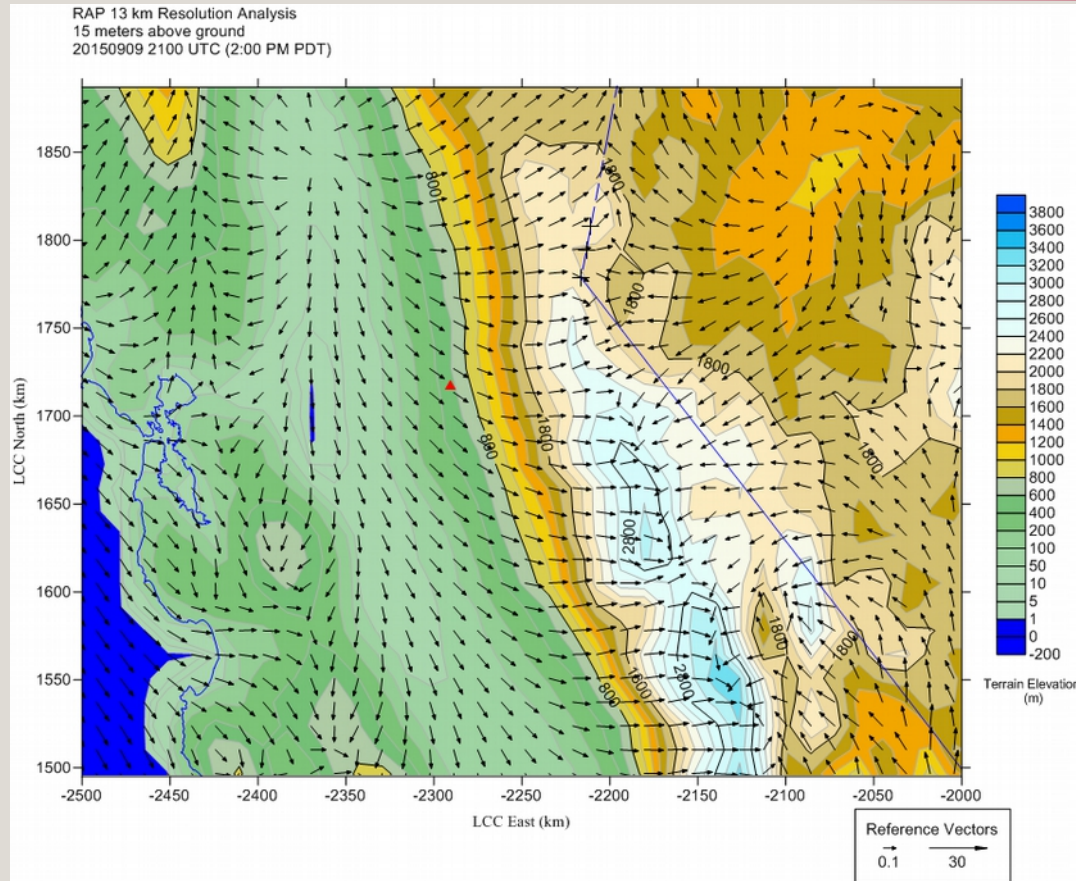
Ram-PUFF can produce Forecasts of Potential downwind impacts following High FTIR Concentration measurements



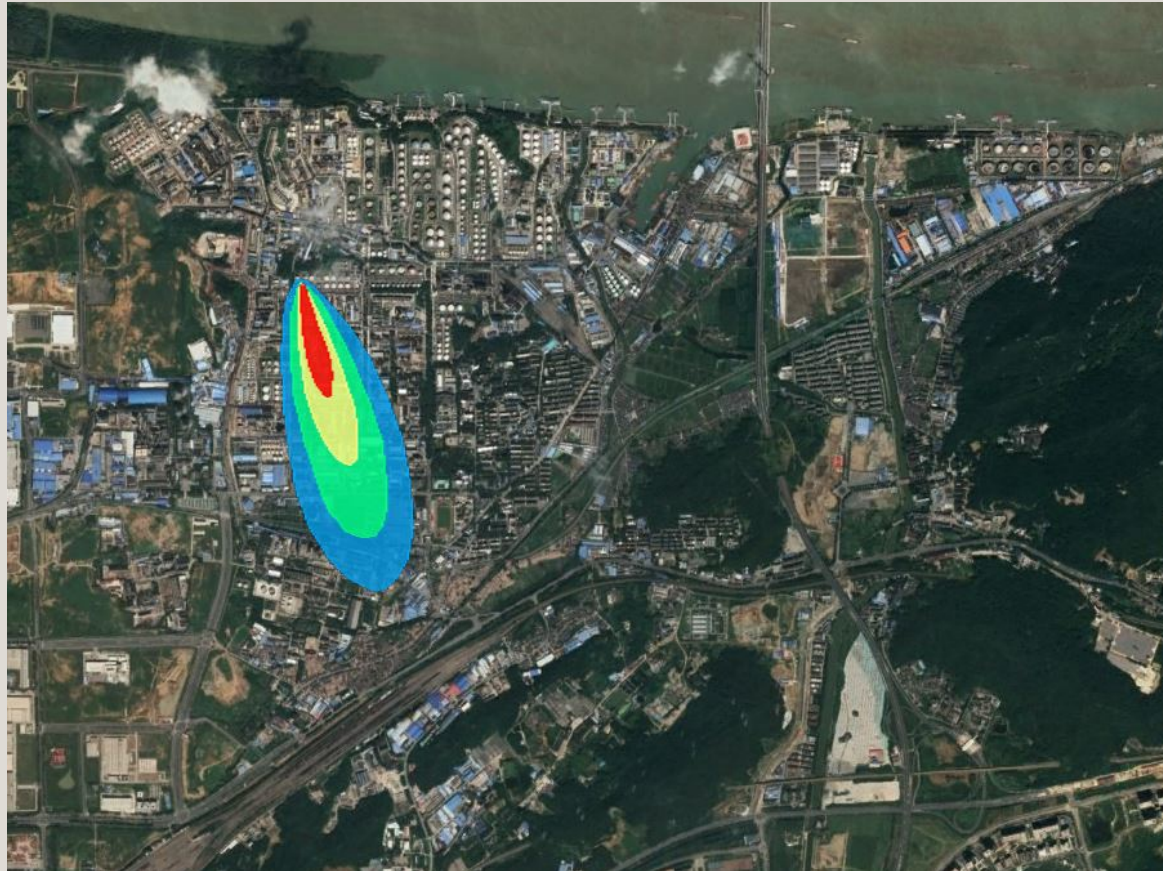
RAM-Puff can be customized for large arrays of potential emissions sources



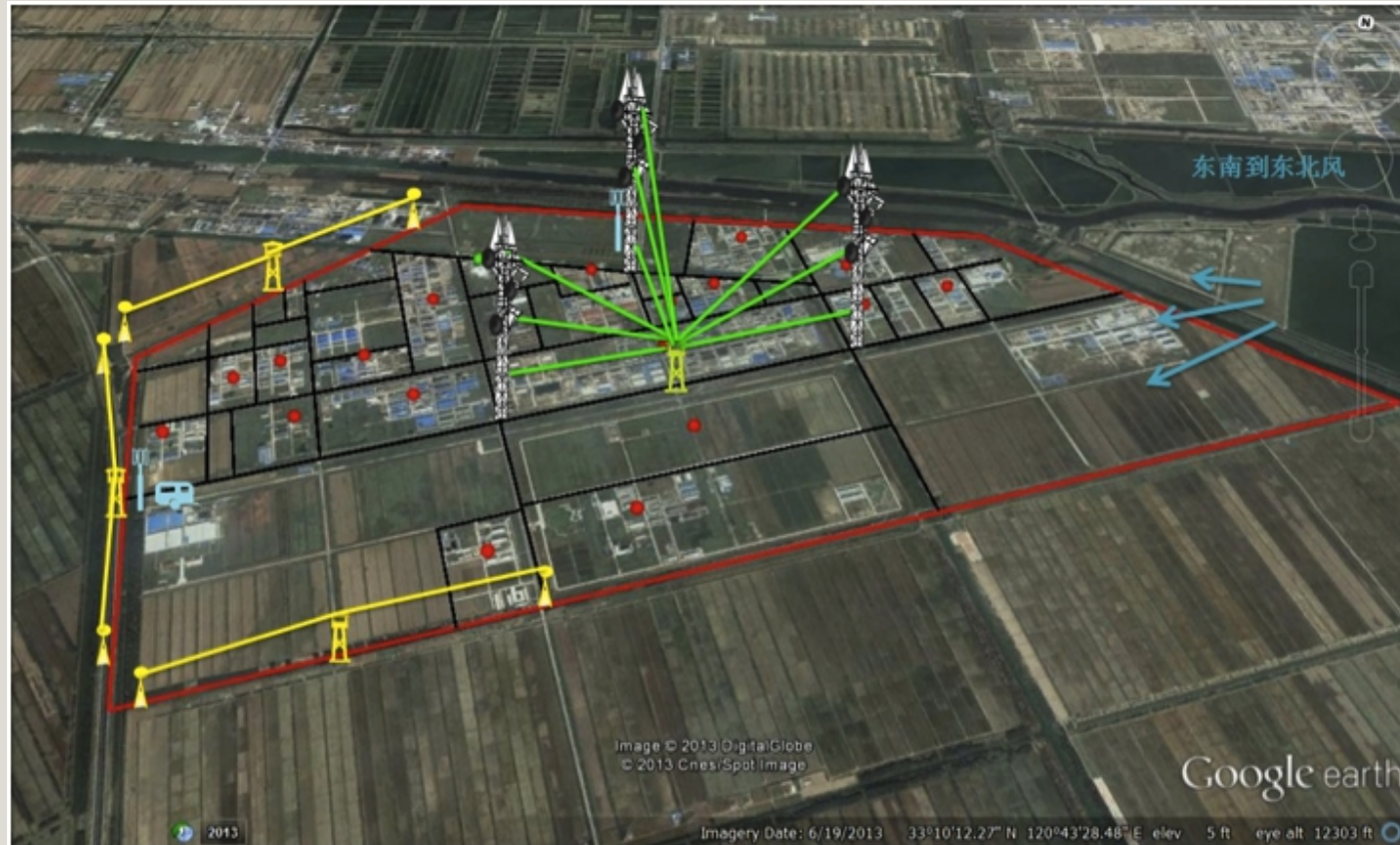
RAM-Puff assimilates real-time measured or forecast meteorology at FTIR instrument site



RAM-puff is applicable to individual FTIR instruments or networks of instruments



Ram-puff is applicable to individual FTIR instruments or networks of instruments



Ram-puff's graphical outputs can be customized

